

REMOTE INSTALLATION

What is remote installation?

It is a functionality in the eAuditor system that allows you to install executable files on computers in a designated location.

WHY USE REMOTE INSTALLATION?

- ✓ Saving time for IT departments without the need for them to be involved in the installation of files each time,
- ✓ high security of installing executable files,
- ✓ mass installation of files (.msi, .exe),
- ✓ the ability for employees to install applications using an application kiosk.

REMOTE INSTALLATION OPERATION PROCESS

The system allows remote installation of MSI packages, exe files, and bat files on computers using WMI. Windows Management Instrumentation is a set of Windows protocols and extensions for managing and access to computer resources, such as:

- network adapters,
- currently open programs,
- process lists.

Remote installation involves installing applications or application packages found in the repository. In the system eAuditor there are two types of repositories - private and public. This makes it even easier to install applications on computers.

PUBLIC REPOSITORY

This is a repository provided by the manufacturer of the eAuditor system, which contains the most commonly used applications in organizations. The public repository is fed by the installers of the FC private repository. The executables have been placed in the cloud, so the administrator has the option to download and use them on the local network. As a result, IT departments do not spend additional time searching for the latest versions of popular applications, because the provider continuously updates these files to the current versions in the repository. In addition, the public repository contains many ready-made installation packages (about 100), so the administrator does not have to manually create each installer. It should be noted that this repository is not used for software installation. Its function is to feed private repositories with installers.

PRIVATE REPOSITORY

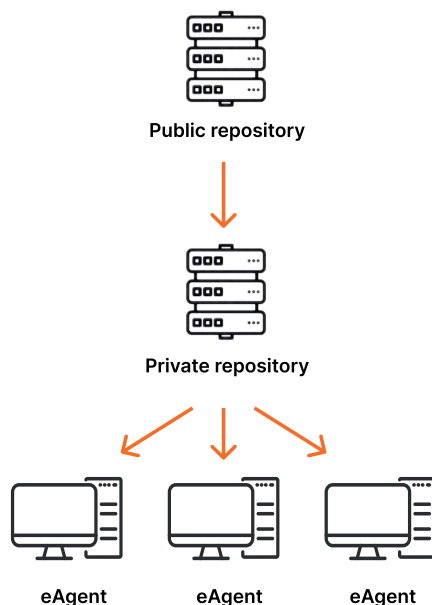
This is a repository that is built by the administrator, who can add executables independently according to their preferences or the needs of the organization. In addition, the administrator can also download applications and application packages made available in the public repository.

The installation process consists of two steps:

- adding the installer to the system repository,
- sending a remote installation command.

This means that the file must be in a specific location and described with the appropriate command for this installation to be performed. The system also supports installations in silent mode.

Communication scheme between the public and private repository



SIMPLE INSTALLATION VERIFICATION

The administrator can also define a checking process to verify that the installation took place correctly. If the installer is placed on the server, then it will be possible to view the repository with information about its location and defined commands.

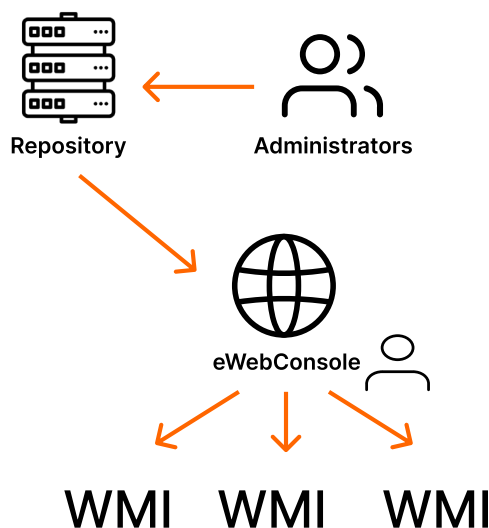
REMOTE INSTALLATION USING WMI

This installation model allows you to easily and quickly deliver applications to the client. In this case, however, the availability of the client within the public repository is required, thus allowing remote access via WMI and firewall configuration.

Installation requirements:

- firewall configuration,
- WMI remote access configuration,
- need to provide credentials for installation.

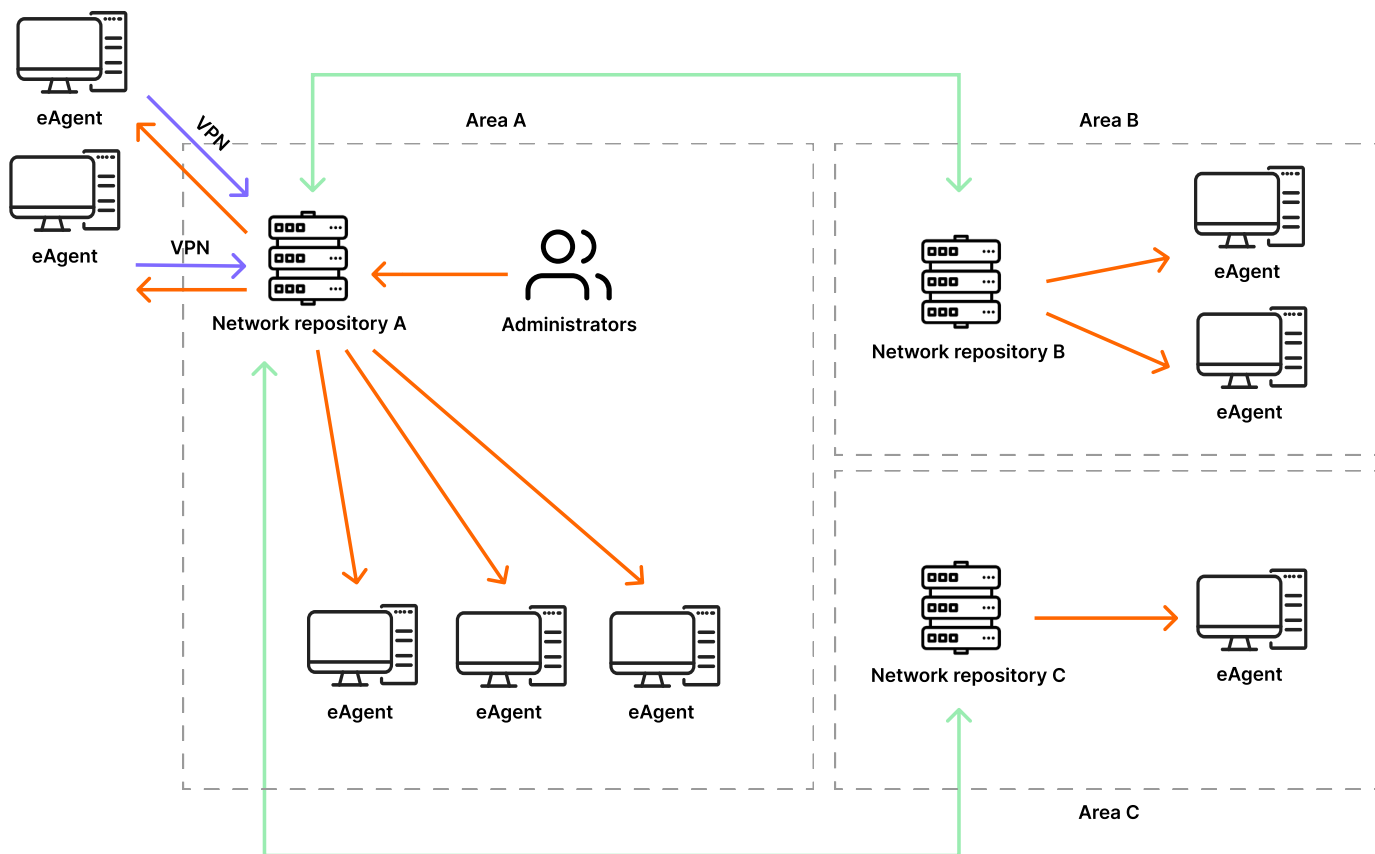
Diagram of remote installation using WMI



REMOTE INSTALLATION WITH THE HELP OF EAGENT (COPYING FROM THE LOCAL REPOSITORY)

Remote installation can also be done by eAgent itself. In this case, its installation is required, so that eAgent downloads applications from a private repository via an encrypted connection. The unavailability of the installer in the private repository makes the installation impossible. To perform it, you need to configure the group of applications and specify which ones require installation. You should also select the group of devices on which the aforementioned applications will be installed. This type of installation is characterized by high fault tolerance (an identified error in one of the repositories does not affect the installations).

Diagram of remote installation using eAgent (copying from the local repository).



An additional advantage of this method is the possibility of using multiple repositories in the organization. This allows you to offload a single instance of the repository.

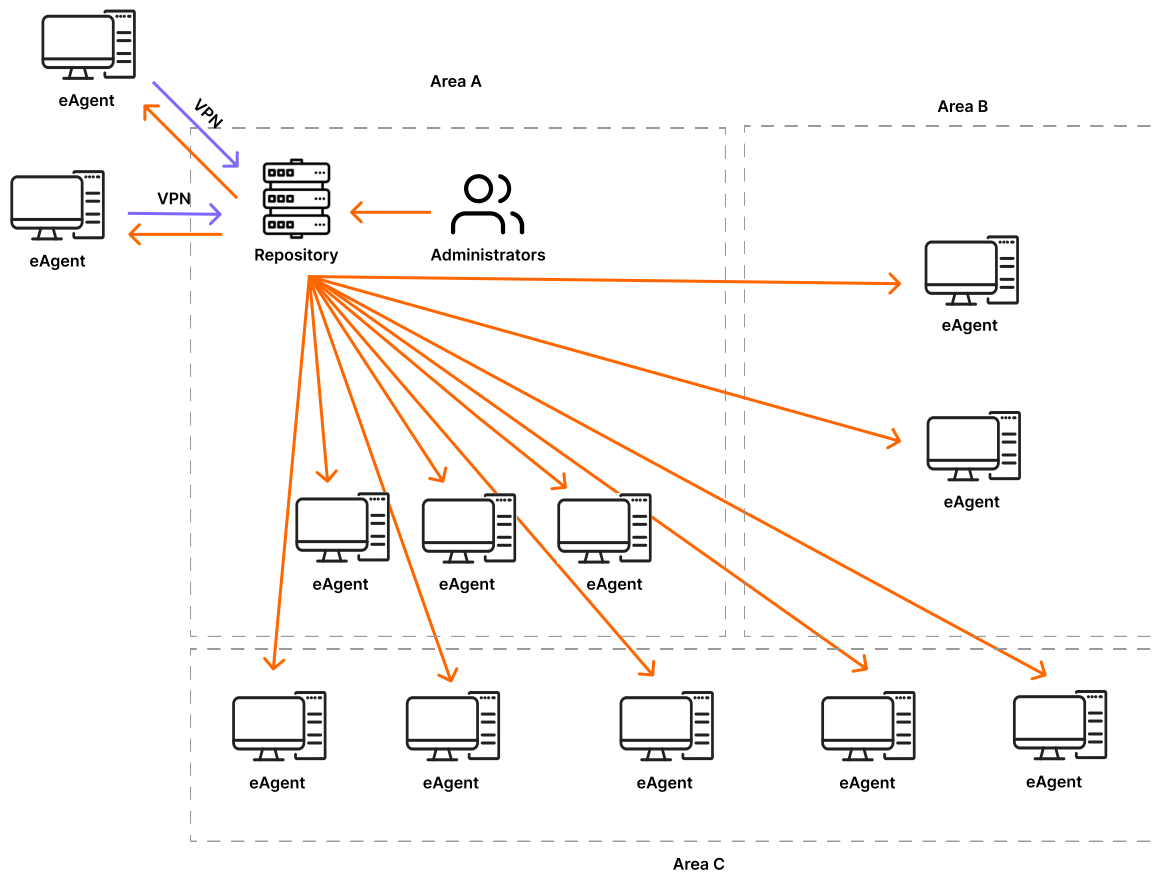
Installation requirements:

- local repository in each area where the installation is performed,
- providing credentials to copy the installer from the repository,
- providing credentials to install the software.

REMOTE INSTALLATION WITH THE HELP OF EAGENT (INSTALLER DELIVERED THROUGH THE SHUFFLE MECHANISM)

Installing files is also possible thanks to the introduction of the installer delivery method using the shuffling mechanism. It requires a connection to eAgent to copy installers. During installation, the package is divided into parts of 5MB each and delivered to the client from the central repository. This allows the application to be sent anywhere without building an additional repository. However, it should be borne in mind that a failure of the main repository prevents installation and causes a high load generated at one point in the network.

Remote installation scheme using eAgent (shuffle mechanism)



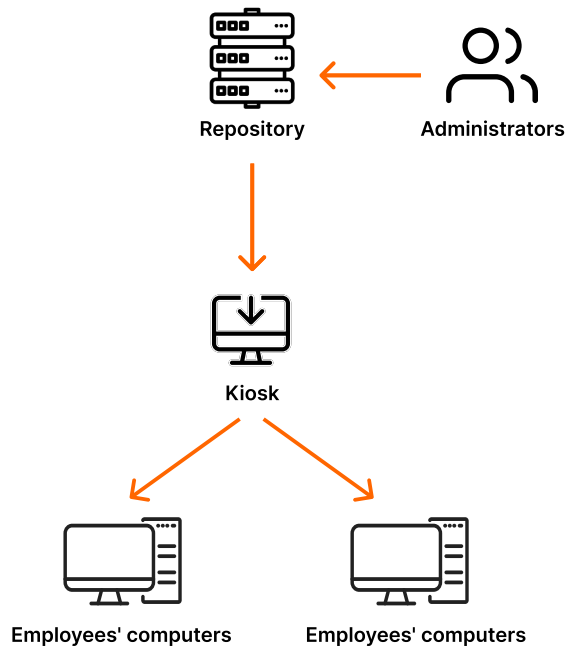
Features:

- the ability to install software without the involvement of a local repository,
- installation mechanism does not use additional components such as copying files through the operating system.

REMOTE INSTALLATION USING AN APPLICATION KIOSK

The remote installation also makes it possible to install applications in bulk via the eAuditor system's functionality, the Application Kiosk. It contains vendor-defined most commonly used applications that an employee can install without having to enter administrator credentials. Ultimately, the administrator decides which applications will be delivered to employees' computers. This allows for a greater user role in the delivery of installers. The use of a kiosk, however, requires the creation of schemes (groups) with software that will be installed only after the user triggers this action.

Diagram of remote installation via Application Kiosk



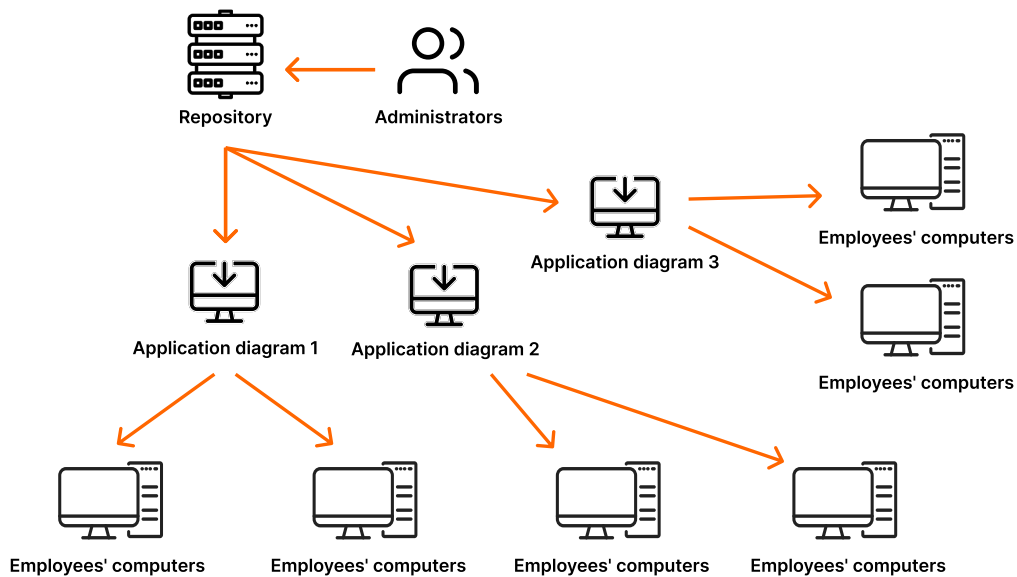
Features:

- requires the creation of groups of applications to install on the computer,
- installation requires the user to call it up.

AUTO-INSTALLATION

This is an installation mechanism that delivers the same applications to new computers matching a defined scheme. The process of automatic installation involves creating groups of installers and assigning them to rules such as computers, users, groups, or filters. If a new computer matching the rule is added, the applications will install automatically according to the scheme.

Auto-installation scheme in eAuditor system



Features:

- requires the creation of groups of applications to install them on the computer,
- installation is done automatically without user participation.